

# 16 TECH CIRCLE

Natick, Massachusetts

OFFICE / LIGHT LAB SPACE FOR LEASE



**\$22.00/SF GROSS  
FOR "AS-IS" DEAL**

OFFICE / LIGHT LAB OPPORTUNITY

**2,000 - 5,889 SF Available**





120V + 220V power drops  
throughout lab space



Capacity to add chemical  
fume hoods

## PROPERTY SPECIFICATIONS

**PROPERTY TYPE:** Office/Lab

**BUILDING SIZE:** 46,104 SF

**LAND AREA:** 5.13 acres

**STORIES:** 2 stories

**AVAILABLE SF:** Second Floor: 2,000 - 5,889 SF

**PARKING:** 4.00/1,000 SF

**LOADING:** Two (2) tailboard docks (one with leveler)

**UTILITIES:** *Power:* Eversource (2,000 Amps)  
*Gas:* Eversource  
*Water/Sewer:* Town of Natick

**ELEVATOR:** One (1) passenger elevator with  
immediate access between loading dock  
and available space

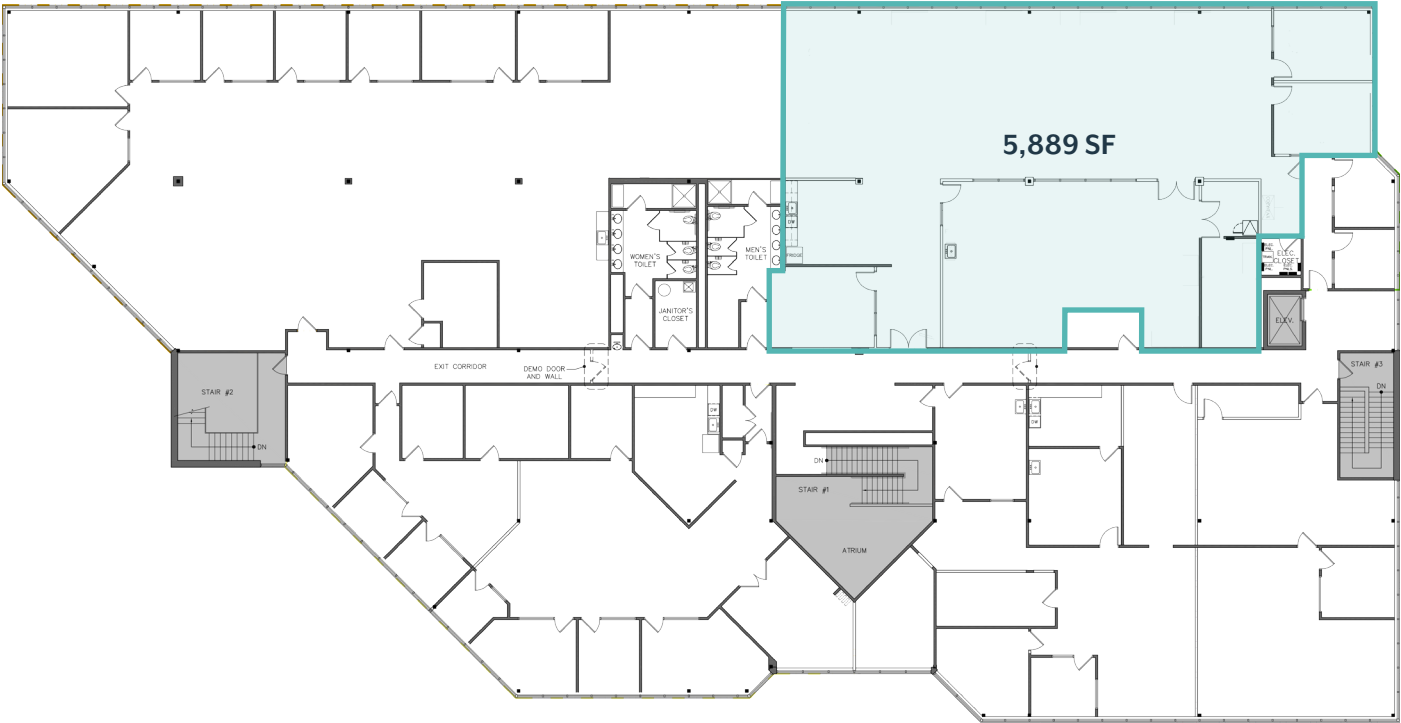


Existing built-out  
kitchen





**FLOOR PLAN**  
**Second Floor | 2,000 - 5,889 SF**



Two (2) existing offices and  
One (1) conference room



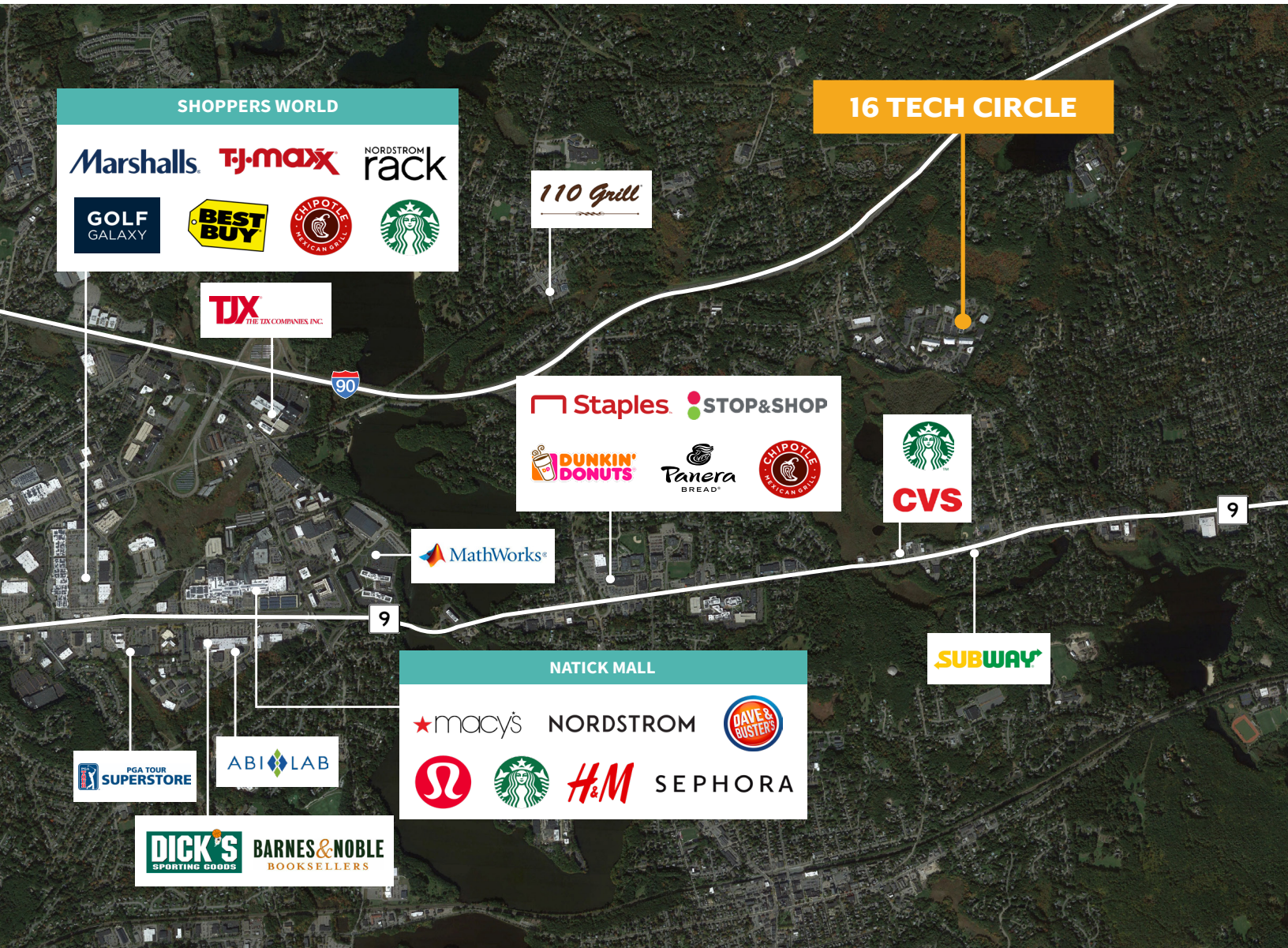
Furnished bench seating  
for 18 people



2,000 - 5,889 SF AVAILABLE

# 16 TECH CIRCLE

Natick, Massachusetts



## CONTACT US TO ARRANGE A TOUR

### PATRICK GRADY

Senior Vice President

617.457.3278

pgrady@hunnemanre.com

### BILL RAND

Vice President

617.457.3336

brand@hunnemanre.com

### HENRY BIRMINGHAM

Associate

617.457.3271

hbirmingham@hunnemanre.com



303 Congress Street, Boston, MA 02210 617.457.3400 [www.hunnemanre.com](http://www.hunnemanre.com)

©2025 Hunneman. All rights reserved. All information has been obtained from sources believed reliable but no warranty or representation is verified for accuracy or completeness. Caution and independent investigation of property and information should be verified. Reliance on this information is at your own risk.