

# 580 CHELSEA STREET

East Boston, Massachusetts

WAREHOUSE

**205 -11,957 SF Available**

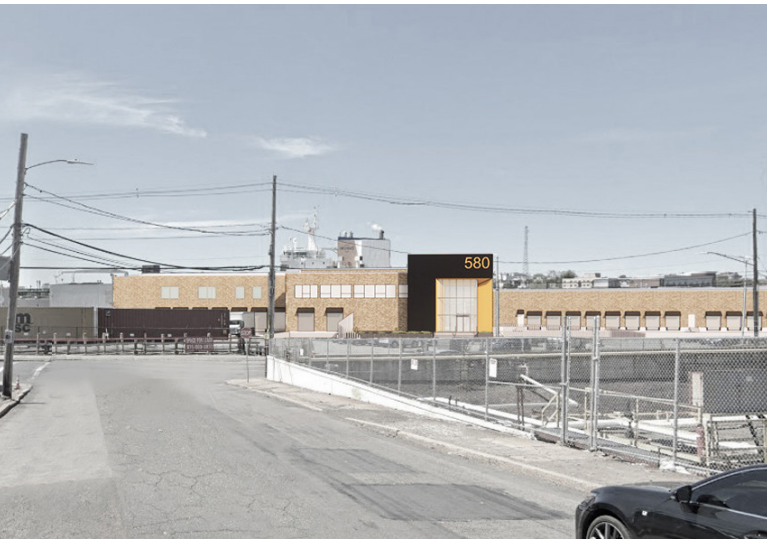


CARGO VENTURES



303 Congress Street, Boston, MA 02210  
617.457.3400 [www.hunneManre.com](http://www.hunneManre.com)





PROPERTY SPECIFICATIONS

TOTAL SF:	86,507 SF
PROPERTY TYPE:	Office/Warehouse
LAND:	3.6 acres
YEAR BUILT:	1965/1980
PARKING:	155 surface spaces, 1.8/1,000 SF
LOCATION:	Situated on the bank of the Chelsea River, the property is the closest air-freight/warehouse building to Logan Airport

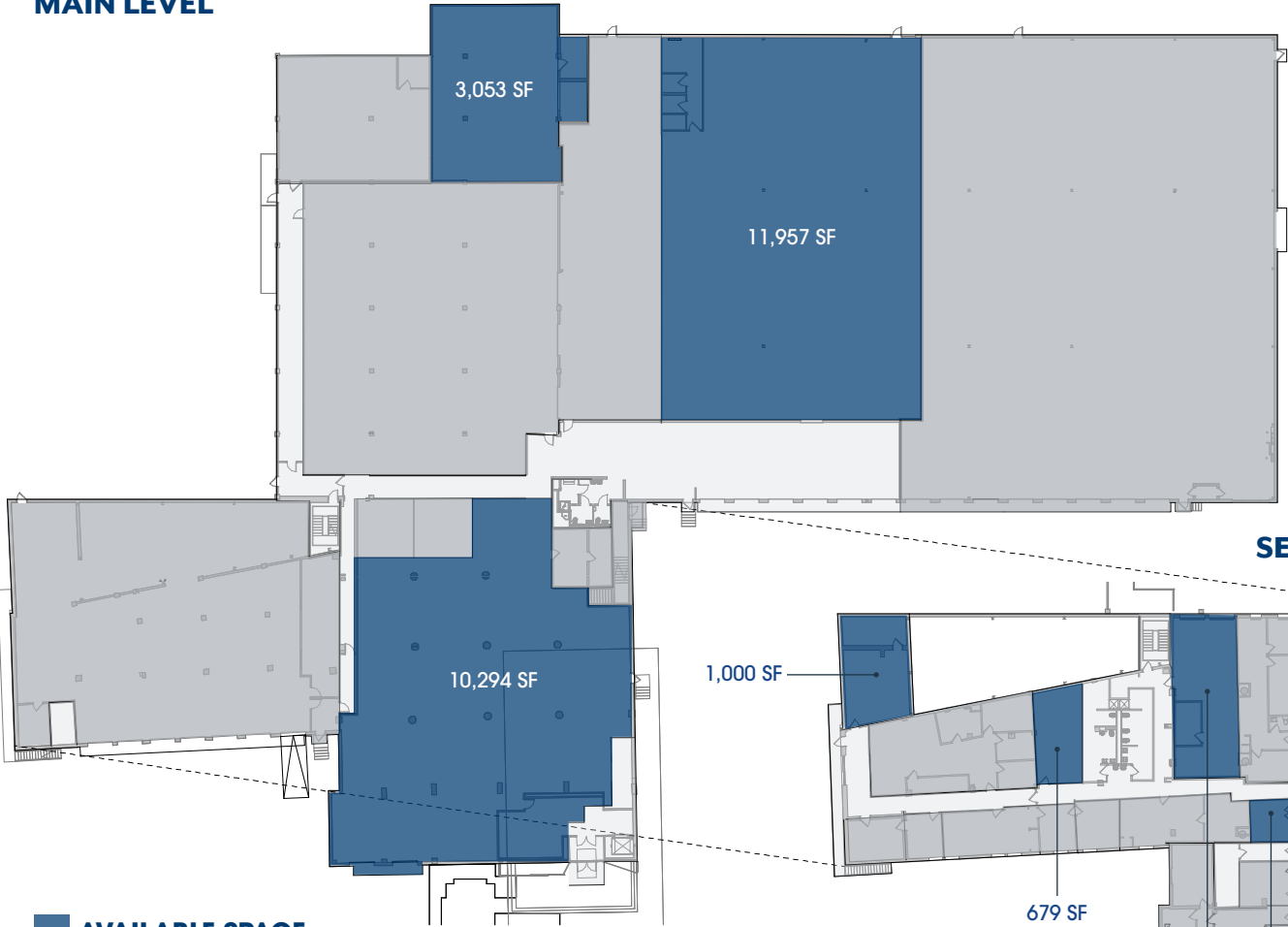
BUILDING SPECIFICATIONS

LOADING:	Twenty-One (21) Tailboard One (1) Drive-In
CEILING HEIGHT:	21' (Warehouse)
HVAC:	Gas-fired roof-mounted HVAC units in office space, gas fired space heaters in warehouse space
SPRINKLERS:	Wet sprinkler system throughout
COLUMN SPACING:	30' w x 30' d
POWER:	1,000a/480v 3p 4w Heavy
ROOF:	Rubber Membrane (Renovated in 2020)
FLOOR LOAD:	700/lbs/SF (in Warehouse)

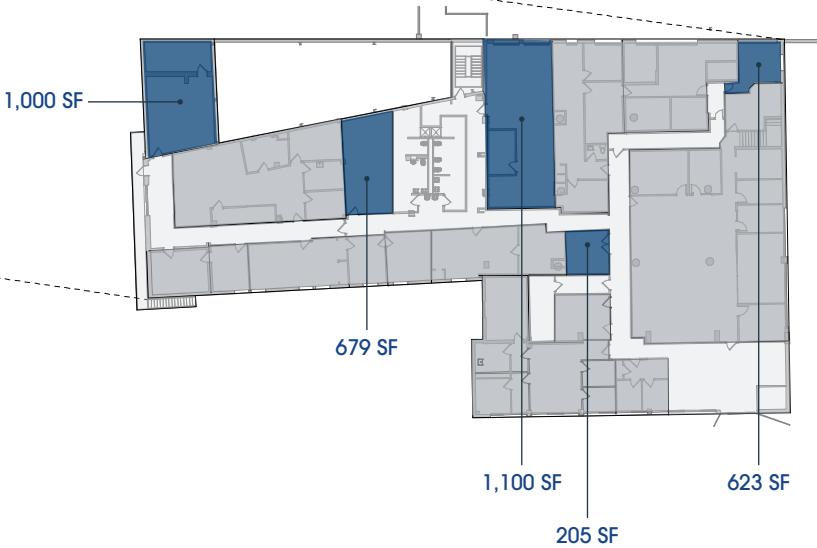
AVAILABLE SPACE

OFFICE/WAREHOUSE: 205 - 11,957 SF

MAIN LEVEL



SECOND FLOOR



- AVAILABLE SPACE
- LEASED AREAS
- COMMON AREAS





FOR LEASE **OFFICE / WAREHOUSE**

# 580 CHELSEA STREET

East Boston, Massachusetts



## CONTACT US TO ARRANGE A TOUR

### TREY AGNEW

Executive Vice President  
617.457.3363  
tagnew@hunnemanre.com

### MICHAEL ALLEN

Vice President  
617.457.3276  
mallen@hunnemanre.com



303 Congress Street, Boston, MA 02210 617.457.3400 [www.hunnemanre.com](http://www.hunnemanre.com)

©2025 Hunneman. All rights reserved. All information has been obtained from sources believed reliable but no warranty or representation is verified for accuracy or completeness. Caution and independent investigation of property and information should be verified. Reliance on this information is at your own risk.