

MULTIPLE SUITES AVAILABLE

29-33 NEWBURY STREET

Boston, Massachusetts

340 - 12,004 RSF Available



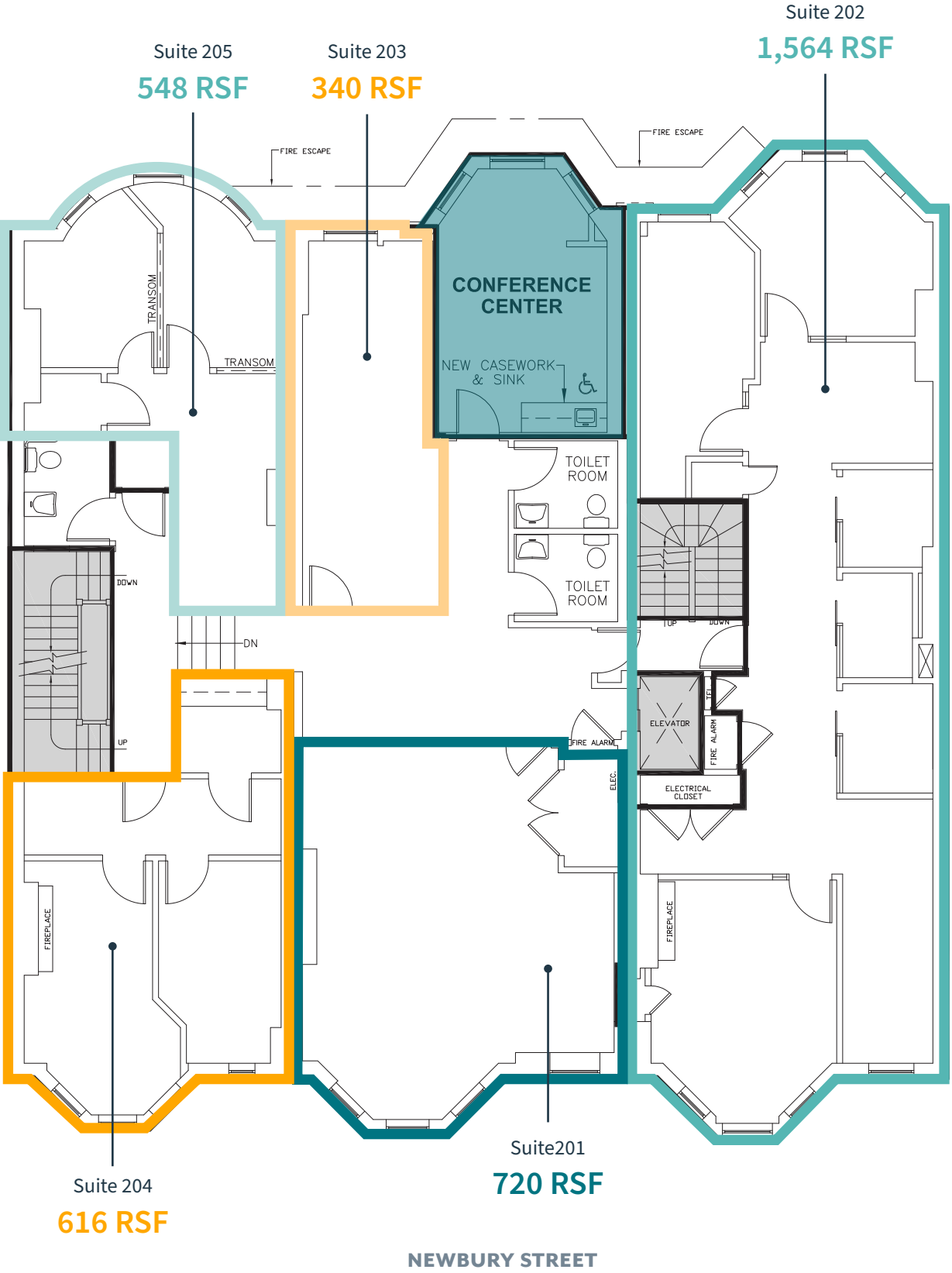
BUILDING SPECIFICATIONS

BUILDING SIZE:	22,500 RSF		
AVAILABLE RSF:	Floor 2: 3,788 RSF	Floor 3: 4,088 RSF	Floor 4: 4,128 RSF
YEAR BUILT:	1890		
STORIES:	5		
TERM:	Flexible		
PARKING:	Four spaces available at rear of building / neighboring parking garages.		
NOTES:	High end build-out with mix of private offices and meeting rooms formerly occupied by a venture capital firm.		



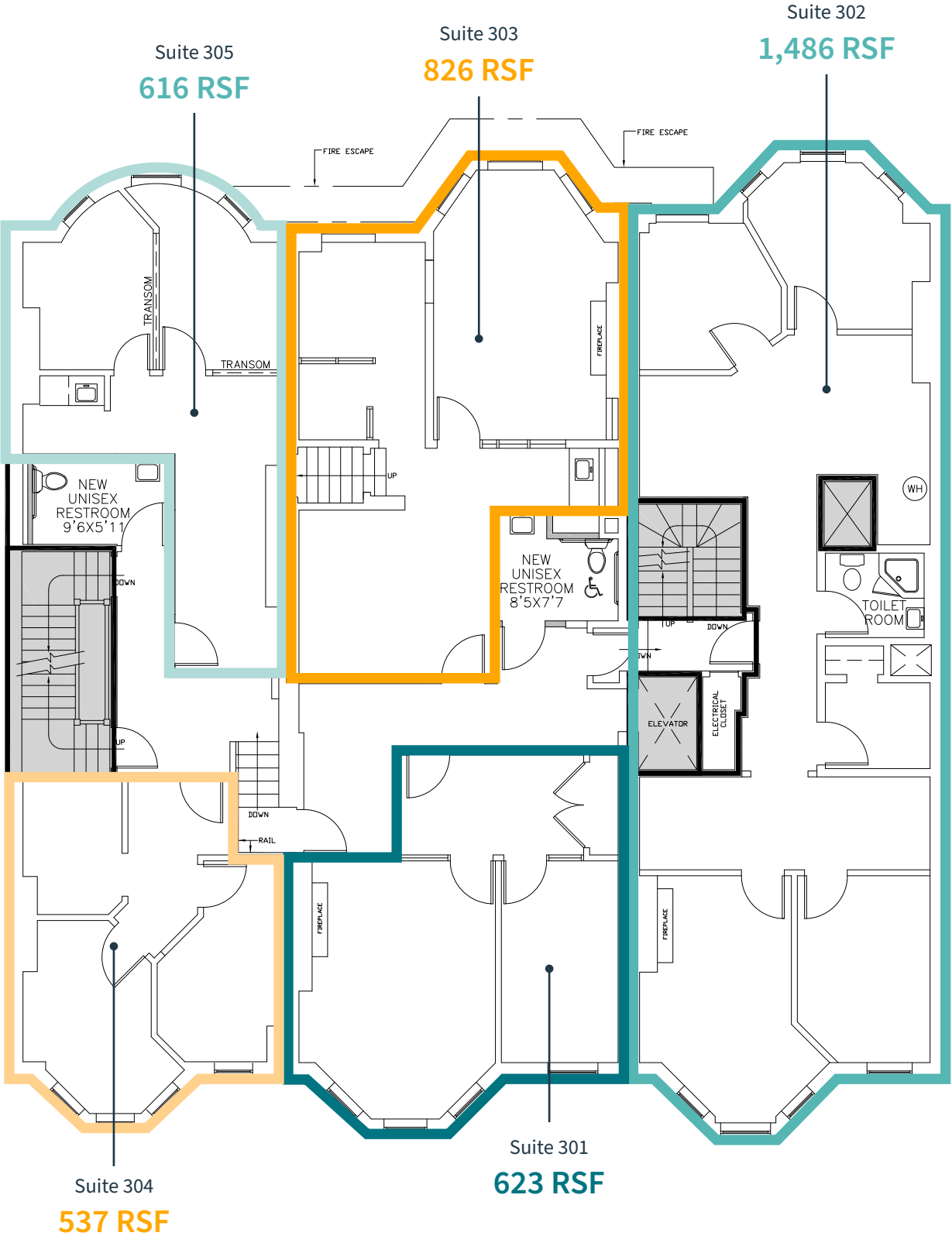
FLOOR PLANS

PROPOSED SECOND FLOOR



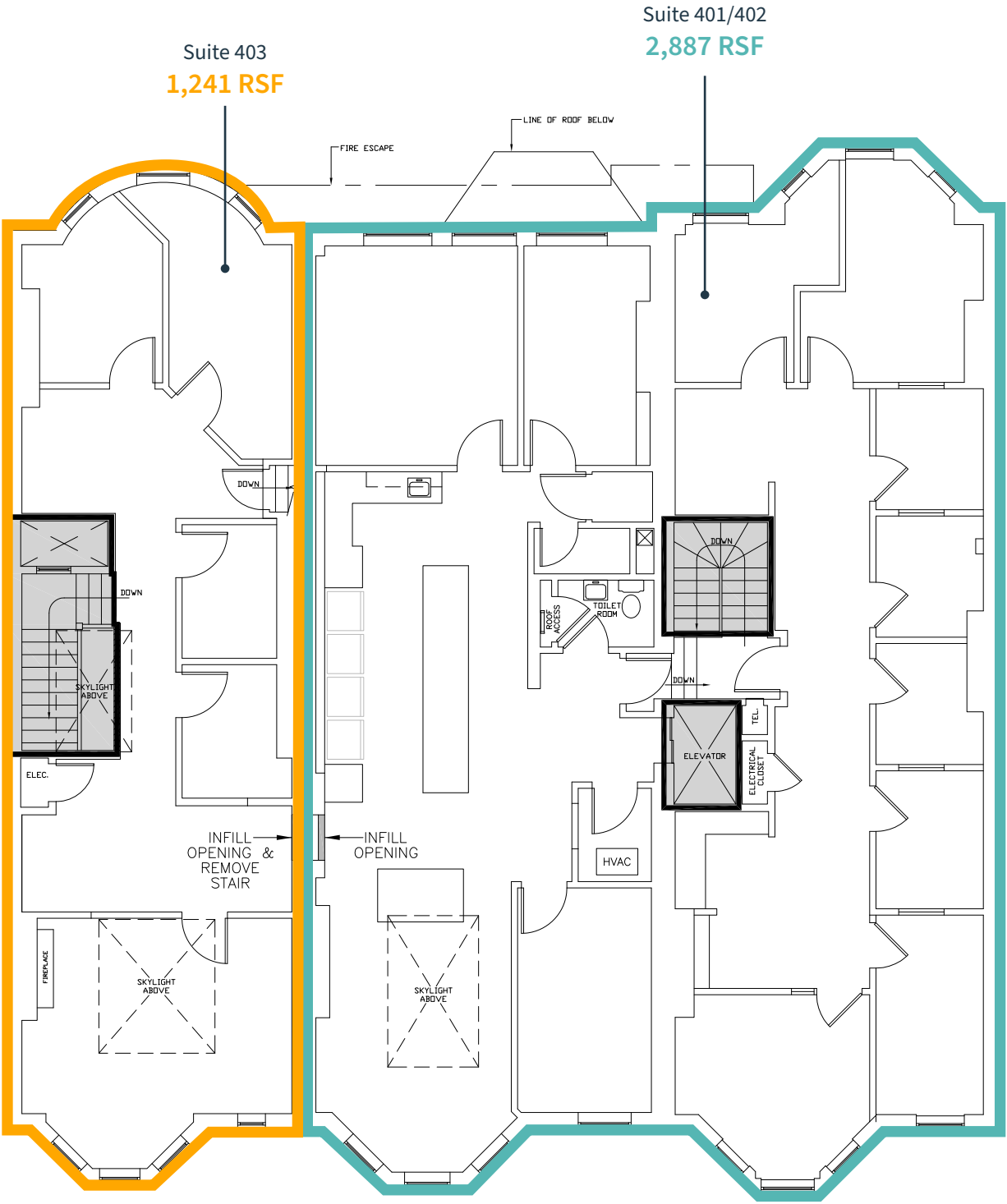
FLOOR PLANS

PROPOSED THIRD FLOOR



NEWBURY STREET

PROPOSED FOURTH FLOOR



NEWBURY STREET



< 1 MILE



< 1 MILE



3 MIN. WALK
ARLINGTON STATION
(Green Line)



10 MIN. WALK
BACK BAY STATION MBTA
(Commuter Rail, Orange Line,
Amtrak, Acela)



IMMEDIATE ACCESS
TO SHOPS AND RESTAURANTS
ON NEWBURY STREET





MULTIPLE SUITES **AVAILABLE**

29-33 NEWBURY STREET

Boston, Massachusetts

CONTACT US TO ARRANGE A TOUR

PETER BEAN

781.771.7715

pbean@hunnemanre.com

 **HUNNEMAN** It means more to us.

303 Congress Street, Boston, MA 02210 617.457.3400 www.hunnemanre.com

@2023 Hunneman. All rights reserved. All information has been obtained from sources believed reliable but no warranty or representation is verified for accuracy or completeness. Caution and independent investigation of property and information should be verified. Reliance on this information is at your own risk.